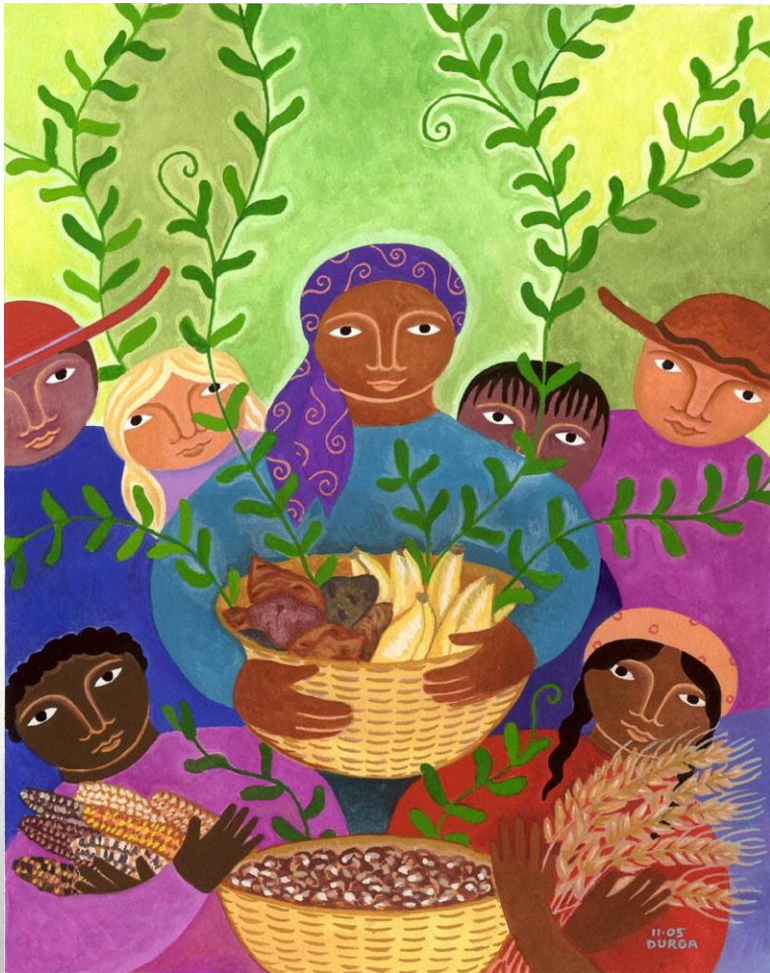


Subprogram 3 Trait Capture for Crop Improvement



Philippe Monneveux
SP3 Leader and Product Manager

Workplan

- unlocking genetic diversity
- methodology
- marker-assisted Selection
- validation
- product management

SP3 Projects

- Competitive (MAS, methodologies)
- Commissioned (validation)
 - well-focused (Strategic Framework)
 - NARS as PIs
 - well-defined selection criteria

Commissioned Projects selection criteria

- strategic framework
- expertise and facilities
- Cooper's Project management tools
(risk, expected impact, capacity)
- pre-existing collaborations

Commissioned Projects characteristics



- preparation (90% of the success determined before starting!)
- links with other SPs
- transparency
- evaluation and reporting
- delivery (templates)
- capacity enhancement (SP5)

How to increase impact?

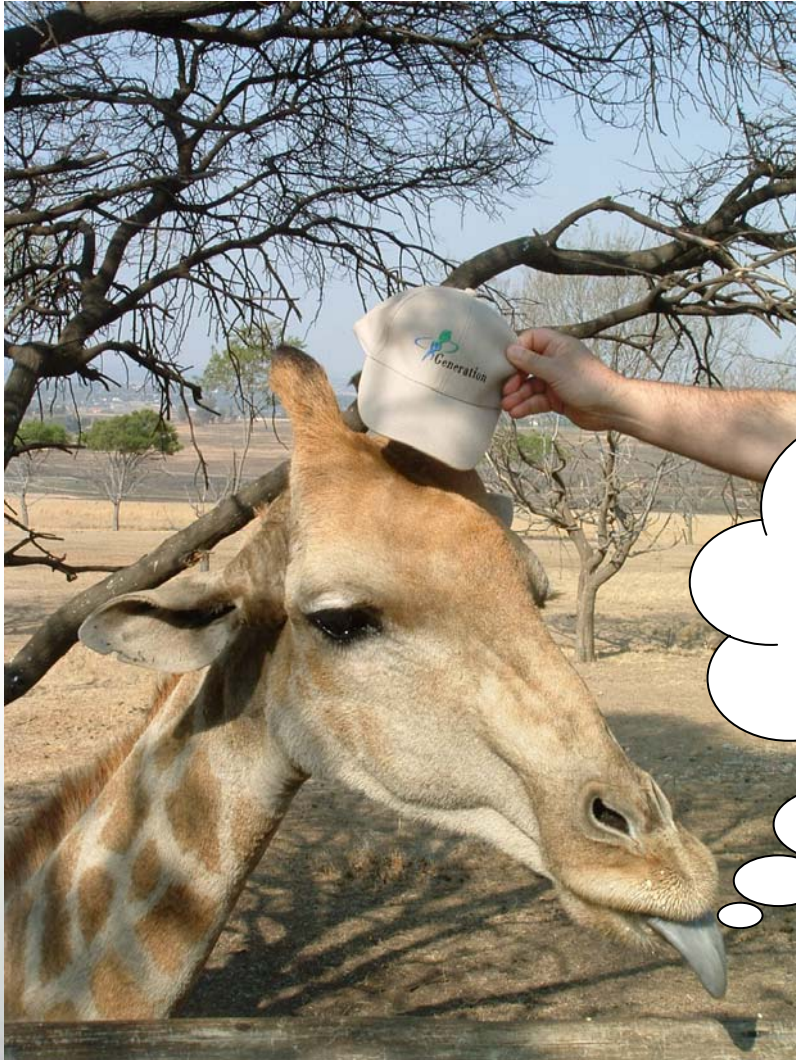
- Product management
(repertoire, validation projects)
- Platforms
- Change of culture



“The essence of knowledge is, having it, to apply it...”

(Confucius)

GCP community




we all are "GCP",
not only the
Management team!

"GCP community"



- improve contacts (communication, on-site visits...)
- change the culture?

ARIs (impact), CG Centers (innovative relations with NARS), NARs (dynamic expression of needs)



End

and thanks for your attention.....