



Federal Agency for  
Agriculture and Food

# Updating MCPD reporting requirements: The case of ITPGR and sMTA

Siegfried Harrer & Frank Begemann

Federal Agency for Agriculture and Food (BLE),  
Information and Coordination Centre for Biological  
Diversity (IBV), Bonn, Germany

**The BLE.**  
for agriculture and food.



- Introduction
- General information requirements under the ITPGR
- Specific requirements under the sMTA
- Opportunities to serve the ITPGR incl. sMTA
- Next steps



# Introduction

## International Treaty on Plant Genetic Resources for Food and Agriculture (IT)

- agreed by the FAO Conference in November 2001, came into force in 2004
- objectives: the conservation and sustainable use of plant genetic resources for food and agriculture and the fair and equitable sharing of the benefits arising out of their use (also known as “multilateral system”)
- legally binding



**The BLE.**  
for agriculture and food.



## General information requirements under ITPGR

- Art 17: all PGRFA
  - ⇒ global info system on PGRFA in coop. with CHM
  - ⇒ incl. early warning component
  - ⇒ serve update of SWPGR and Global Plan of Action (GPA)
- Art 13.2(a): Multilateral System (MLS)
  - ⇒ Contracting Parties´ (countries´) responsibilities
  - ⇒ catalogues & inventories of PGRFA under the MLS
  - ⇒ info on technologies, technical, scientific & socio-economic research
  - ⇒ incl., subject to applicable law and national capabilities, non-confidential characterization & evaluation - data
  - ⇒ such information be made available through Art 17 info system



## Specific requirements under the sMTA

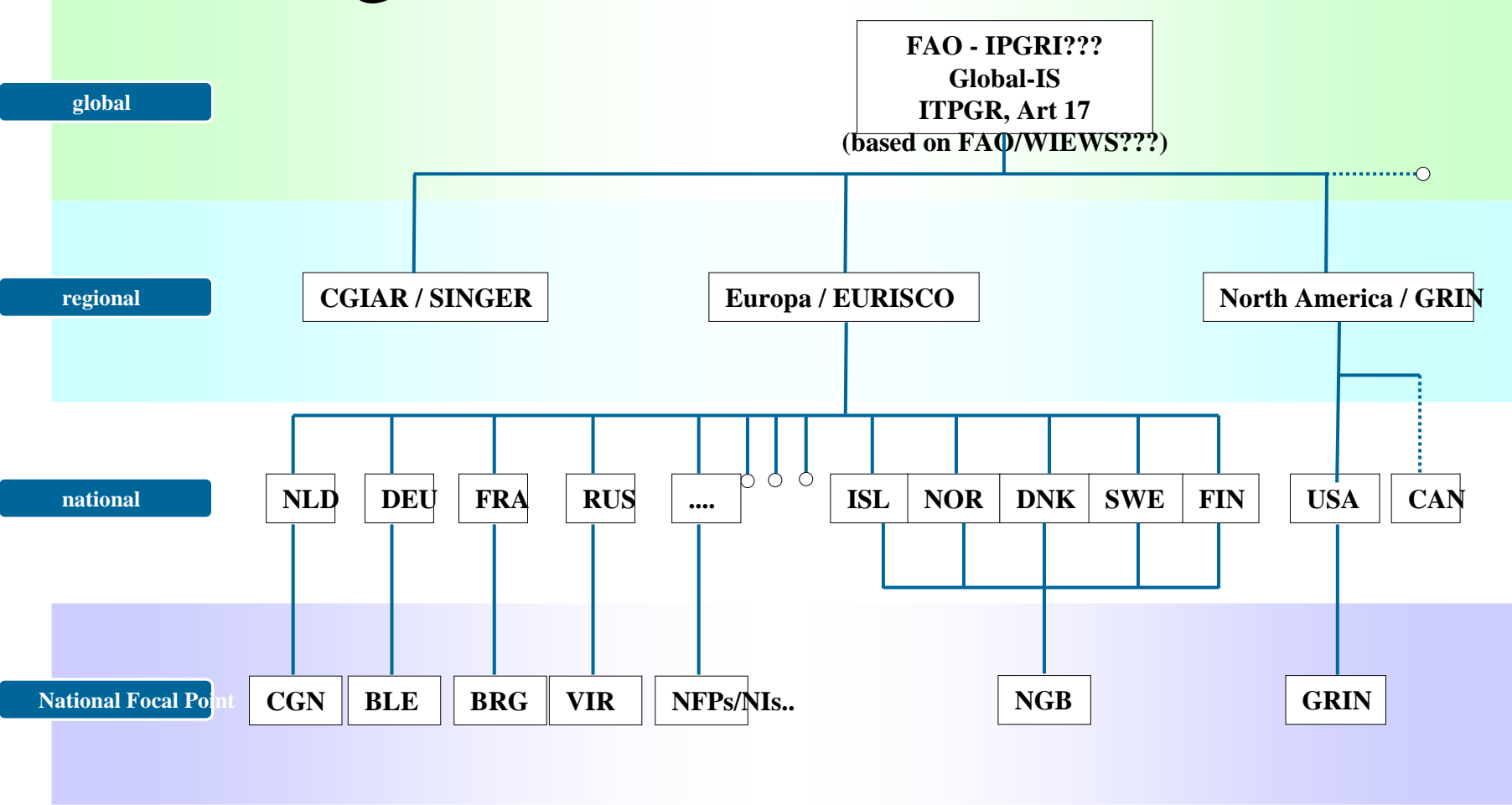
- Provider reports to Governing Body
  - ⇒ Art 5(e): periodic reports on sMTA from provider to Governing Body
- Recipient reports to Multilateral System
  - ⇒ Art 6.9: information on R&D-data from recipient to MLS via Art. 17 info system
  - ⇒ no direct reporting back from recipient to provider
- Third Party Beneficiary (FAO) needs information
  - ⇒ Art 4.4: TPB right to request appropriate information
  - 5(e), 6.5(c), 8.3, Annex 2.3



## Opportunities to serve ITPGR incl. sMTA

- Art 17: all PGRFA
  - ⇒ global info system on PGRFA in coop. with CHM
  - ⇒ *”Contracting Parties (countries) shall cooperate to develop and strengthen.....based on existing information systems...”*
  - ⇒ not yet existing...but to be developed
- Existing information infra-structure Europe
  - ⇒ FAO/WIEWS, CGIAR/SINGER, US/GRIN, EU/EURISCO and other regional systems
  - ⇒ CBD/CHM: Clearing House Mechanism (Techn. Transfer)
  - ⇒ Global Biodiversity Information Facility (Standards)

# Existing information infra-structure





## Opportunities to serve ITPGR incl. sMTA

- to offer Nat. Inventories, EURISCO as the European contribution to the ITPGR-Art. 17 info system to FAO / ITPGR Secretariat
- to clarify in National Inventories / EURISCO Material included in the Multilateral System
  - ⇒ Contracting Parties (ITPGR) and “designated” Material
  - ⇒ amend structure (MCPD) and data



## Next steps

### Needs

Information on material designated for

- international (e.g. MLS)

**The BLE.**  
for agriculture and food.



## Next steps

### Needs

Information on material designated for

- international (e.g. MLS)
- regional (AEGIS)
- national (national & institutional collections) level.



## Next steps for updating MCPD

### Needs

Information on material designated for

- MLS (international level)
- [AEGIS (regional level)
- national & institutional level]

⇒ New **“Status of access & conservation”** ???



## Opportunities to serve ITPGR incl. sMTA

- to include sMTA-reporting to the Governing Body into National Inventories / EURISCO
  - ⇒ amend structure (MCPD) to be agreed by ITPGR-Secretariat
- a stepwise approach to document r&d results (char. & evaluation data) from “recipients” of Material from the MLS in EURISCO via Nat. Inventories



## Next steps

### Needs

- Reporting on sMTA
- “Documentation” of R&D-data

⇒ subset of MCPD (accessions descriptors, MLS descriptors)



Federal Agency for  
Agriculture and Food

**Thank you.....**

**The BLE.  
for agriculture and food.**