



Perspectives from the Global Crop Diversity Trust

Jane Toll and Mellissa Wood

Presentation Outline



- Trust Goal and Principles and Criteria for funding support
- Value of this workshop to Trust activities & expectations of gene bank performance
- Overview of broad Trust activities
- Grant implementation system and processes, including evaluations

Trust's Goal



- To help develop an effective, efficient and sustainable global system to ensure the conservation and availability of plant genetic resources for food and agriculture
- An endowment fund - interest from which will support globally important collections in perpetuity



Eligibility Principles

- PGR are of crops included in Annex 1 or under Article 15 of International Treaty
- PGRFA accessible under terms of access and benefit sharing of multilateral system
- Holder is committed to long-term conservation and availability
- Holder undertakes to work in partnership with others to develop an efficient and effective global system

Trust Support



Criteria for long-term funding support

- Recipient has effective links to users of plant genetic resources
- PGRFA to be conserved are judged important within context of an agreed global conservation strategy
- Legal status of collection and holder assures ability to meet eligibility principles
- Recipient is willing to act in partnership with others to achieve a rational global system for conservation and availability of PGRFA
- Recipient has necessary human resources and management systems to conserve PGRFA to accepted standards
- Facilities are adequate to ensure long-term conservation

Why is this workshop of value to the Trust?



- Assessment - we need to be able to assess whether a collection meets the criteria to play a global system role
- Evaluation - we need to monitor the performance and impacts of our long-term grants
- We would like to use the indicators being designed by this workshop rather than develop an additional set (to do essentially the same thing)

Genebank performance



Trust criteria relevant to genebank performance

- Recipient has effective links to **users** of plant genetic resources
- Recipient is willing to act in **partnership** with others to achieve a rational system
- Recipient has necessary human resources and **management** systems to conserve PGRFA
- Facilities are adequate to ensure long-term **conservation**

Genebank performance



Expectations

- Improving the coverage of genebanks ex situ (including analyzing and filling gaps in collections in partnership with others)
- Providing conservation services
 - Long-term storage and management of collections at international standards (health, regeneration, documentation, etc)
 - Safety duplication of collections
 - Characterization and evaluation of germplasm
 - Provision of information in publicly available information systems
 - Distribution of germplasm on request and proactively through links to users
- Providing training and capacity building
- Partnering with other genebanks and networks

Activities of the Trust

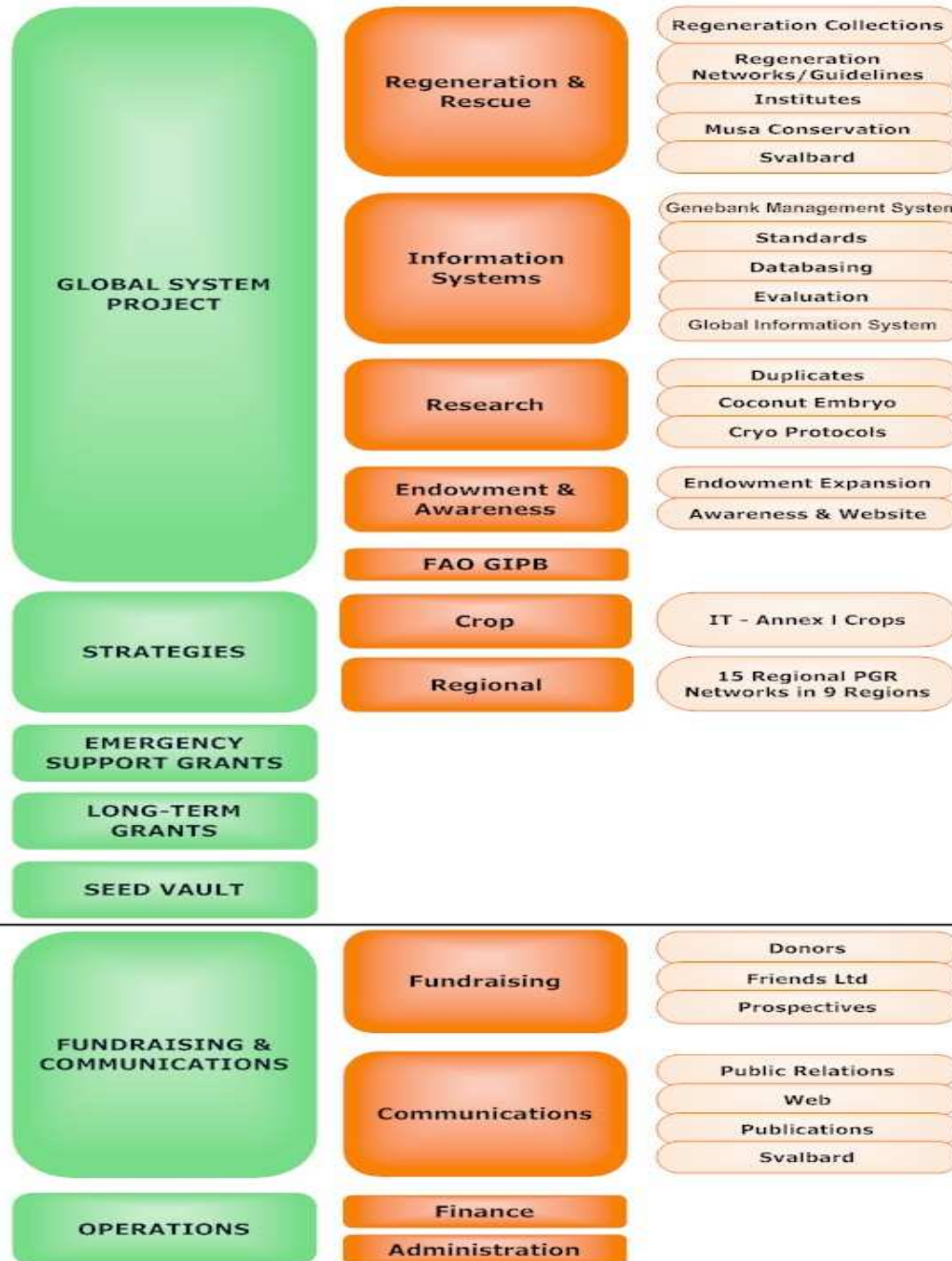


- STRATEGY DEVELOPMENT FOR DECISION SUPPORT
 - Global and regional crop strategies

- CAPACITY BUILDING
 - Regenerate threatened collections
 - Safety duplicate collections
 - Upgrade key genebanks
 - Develop information systems
 - Promote use
 - Improve methods to conserve problem crops

- LONG -TERM CONSERVATION
 - Long-term grants (in perpetuity)

OPERATIONS 2008



Grant implementation

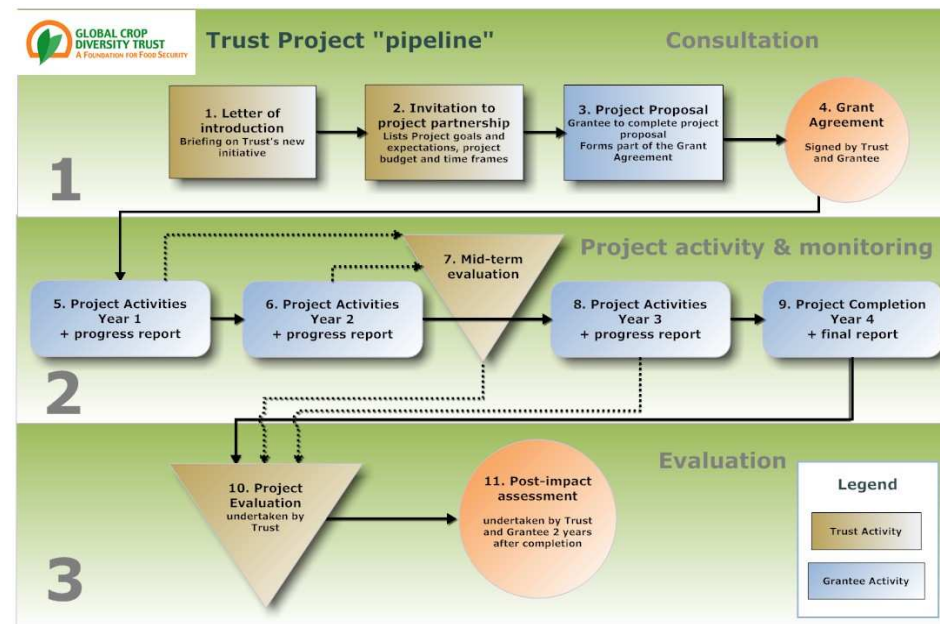


➤ Implementation of grants occurs in 3 phases:

1. Consultation

2. Project activity and monitoring

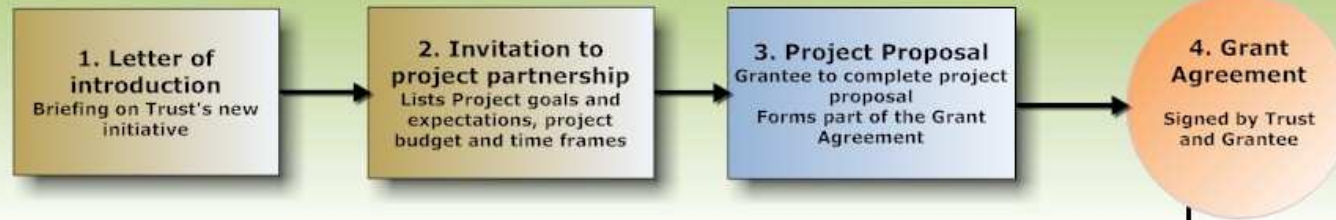
3. Evaluation



Trust Project "pipeline"

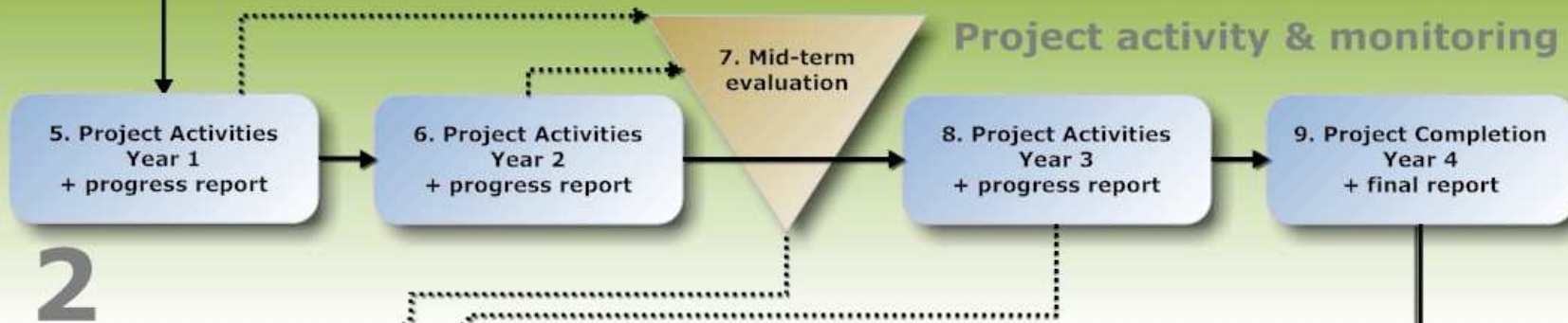
Consultation

1



2

Project activity & monitoring



3

Evaluation



Legend

Trust Activity

Grantee Activity

Grant Evaluation



- Plan to utilise existing external evaluations (5-yearly) or hire external reviewers
- Within the next four years the Trust be will be externally evaluated
 - The progress reports of the grants may be used as input to this evaluations
- Two external evaluations for the current capacity building component of the Trust programme:
 - April 2009 - mid-term external evaluation
 - 2011- final external evaluation