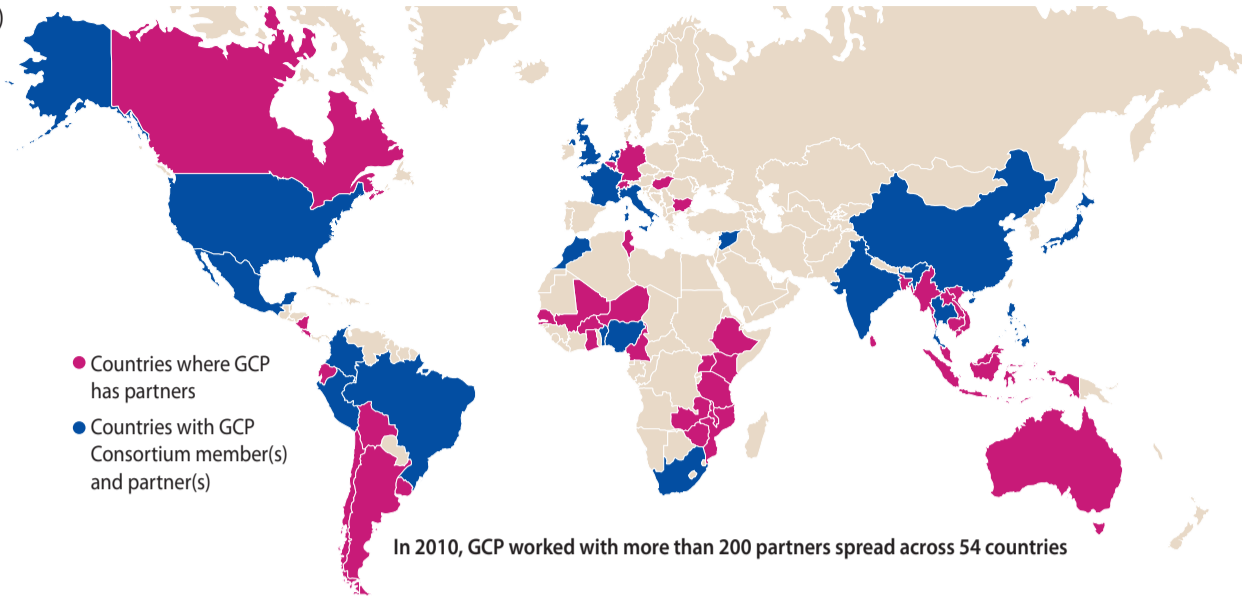




The Generation Challenge Programme (GCP) of the Consultative Group on International Agricultural Research (CGIAR) is a global partnership for exploring plant genetic diversity and developing – for resource-poor farmers in harsh environments – crops with improved stress tolerance. GCP brings together diverse partners to facilitate the flow of products and information to those who need them.

Our key focus is fortifying plants to withstand drought and other stresses such as pests and diseases.



Developing-country partners				Newly industrialised countries		Industrialised-country partners	
Central and West Africa	Latin America and the Caribbean	South and Southeast Asia	Sub-Saharan Africa	Latin America and the Caribbean		Asia	North America
1. Morocco	5. Argentina	14. Bangladesh	21. Burkina Faso	36. Brazil	37. Mexico	44. Japan	52. Canada
2. Tunisia	6. Bolivia	15. Cambodia	22. Cameroon			45. Belgium	53. USA
	7. Chile	16. Indonesia	23. Ethiopia	South and Southeast Asia		46. France	Oceania
	8. Colombia	17. Laos	24. Ghana	38. China	39. India	47. Germany	54. Australia
East Europe	9. Costa Rica	18. Myanmar	25. Kenya	40. Malaysia	41. Thailand	48. Italy	
3. Bulgaria	10. Ecuador	19. Sri Lanka	26. Malawi	42. The Philippines		49. Switzerland	
4. Hungary	11. Nicaragua	20. Vietnam	27. Mali	Sub-Saharan Africa		50. The Netherlands	
	12. Peru		28. Mozambique	43. South Africa		51. United Kingdom	
	13. Uruguay						

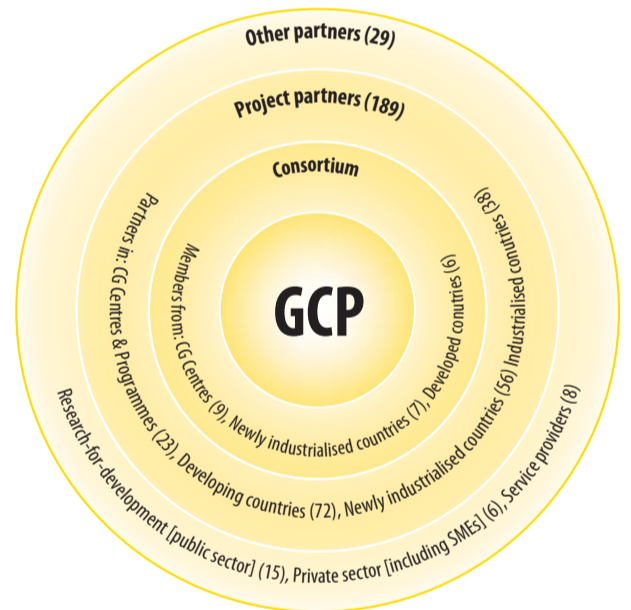


Joining hands with partners

To achieve our objectives, we rely on our network. This network leverages significant resources – funds, skills, equipment, knowledge and social capital – through broad and diverse partnerships with both the public and the private sector.

- As of 2010, the GCP network comprised:
- A 22-member Consortium (9 CGIAR Centres, 13 non-CGIAR institutes, including members in the developing world);
 - 64 developing-country research institutes, 52 from newly industrialised countries, and 35 from industrialised countries; and,
 - a broad cross-section of stakeholders.

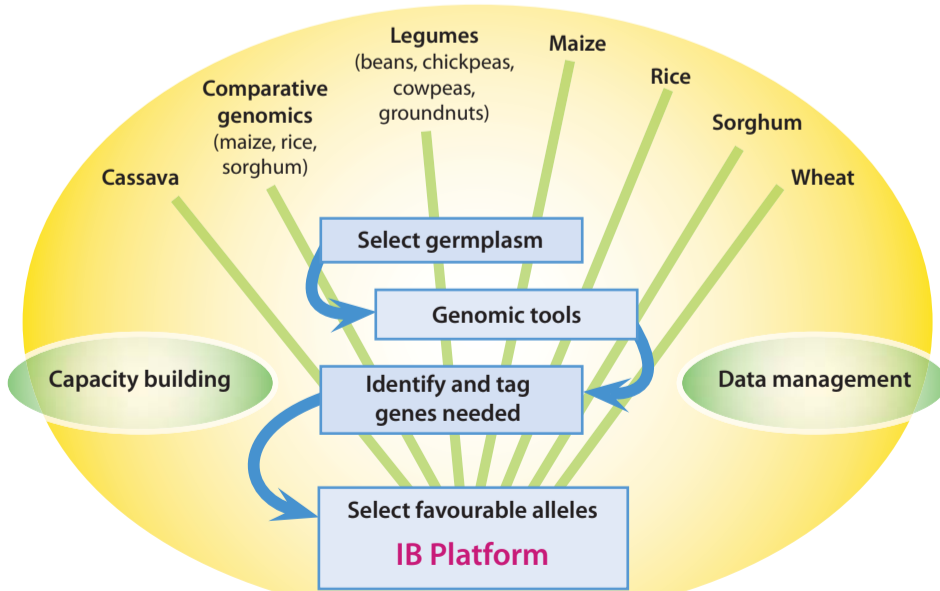
The GCP network in 2010: 200+ institutes



Our activities and structure

In Phase II, GCP (2009–2013), GCP primarily focuses on seven Research Initiatives (RI) organised by crop and crop clusters (see diagram) as well as a service component – the Integrated Breeding Platform (IBP): a web-based one-stop shop for information, analytical tools and related services to design and carry out integrated breeding projects. The RIs are trait- and country-specific. As selected user cases of IBP, the RIs aim to demonstrate that modern and integrated breeding approaches can have a significant impact on crop productivity in developing countries.

GCP's research and research support activities



Our research–delivery pathway

We monitor the development and delivery of our research products through formal project Delivery Plans. All GCP projects are:

- conceived with a very clear vision of project products, and target users of these products
- focus on priority crops and target environments identified by impact studies.

In a relatively short time, we have woven a vibrant and active community of crop scientists and – through our partners – we have tangible products from our research. For details on our products, and more, please visit us online.

www.generationcp.org

