

RESEARCH ARTICLE

Open Access

# A sweetpotato gene index established by de novo assembly of pyrosequencing and Sanger sequences and mining for gene-based microsatellite markers

Roland Schafleitner<sup>1\*</sup>, Luz R Tincopa<sup>1</sup>, Omar Palomino<sup>2</sup>, Genoveva Rossel<sup>3</sup>, Ronald F Robles<sup>3</sup>, Rocio Alagon<sup>3</sup>, Carlos Rivera<sup>1</sup>, Cynthia Quispe<sup>1</sup>, Luis Rojas<sup>2</sup>, Jaime A Pacheco<sup>1</sup>, Julio Solis<sup>4</sup>, Diogenes Cerna<sup>1</sup>, Ji Young Kim<sup>1</sup>, Jack Hou<sup>1</sup>, Reinhard Simon<sup>2</sup>

## Abstract

**Background:** Sweetpotato (*Ipomoea batatas* (L.) Lam.), a hexaploid outcrossing crop, is an important staple and food security crop in developing countries in Africa and Asia. The availability of genomic resources for sweetpotato is in striking contrast to its importance for human nutrition. Previously existing sequence data were restricted to around 22,000 expressed sequence tag (EST) sequences and ~ 1,500 GenBank sequences. We have used 454 pyrosequencing to augment the available gene sequence information to enhance functional genomics and marker design for this plant species.

**Results:** Two quarter 454 pyrosequencing runs used two normalized cDNA collections from stems and leaves from drought-stressed sweetpotato clone *Tanzania* and yielded 524,209 reads, which were assembled together with 22,094 publically available expressed sequence tags into 31,685 sets of overlapping DNA segments and 34,733 unassembled sequences. Blastx comparisons with the UniRef100 database allowed annotation of 23,957 contigs and 15,342 singletons resulting in 24,657 putatively unique genes. Further, 27,119 sequences had no match to protein sequences of UniRef100 database. On the basis of this gene index, we have identified 1,661 gene-based microsatellite sequences, of which 223 were selected for testing and 195 were successfully amplified in a test panel of 6 hexaploid (*I. batatas*) and 2 diploid (*I. trifida*) accessions.

**Conclusions:** The sweetpotato gene index is a useful source for functionally annotated sweetpotato gene sequences that contains three times more gene sequence information for sweetpotato than previous EST assemblies. A searchable version of the gene index, including a blastn function, is available at [http://www.cipotato.org/sweetpotato\\_gene\\_index](http://www.cipotato.org/sweetpotato_gene_index).

## Background

Sweetpotato (*Ipomoea batatas* (L.) Lam.) belongs to the *Convolvulaceae* (morning glory family). With an annual global production of 110 million tons, it is an important crop in developing countries and has an abundance of uses, ranging from consumption of fresh roots or leaves to processing into animal feed, starch, flour, candy, and

alcohol. Sweetpotato produces more food per hectare than wheat, rice, or cassava, which makes it an important food security crop. The high pro-vitamin A content of orange-fleshed sweetpotato varieties plays a crucial role in mitigating vitamin A deficiency that is still widespread among the poor in developing countries. Adding orange-fleshed sweetpotato to the daily diet could prevent vitamin A deficiency-related blindness and maternal mortality [1].

African farmers produce about 14 million tons of sweetpotato annually with yields of about 4.2 t/ha.

\* Correspondence: roland.schafleitner@worldveg.org

<sup>1</sup>Germplasm Enhancement and Crop Improvement Division, International Potato Center, La Molina, Lima, Peru

Full list of author information is available at the end of the article

Yields in Africa amount to about a fifth of those in China, indicating a huge potential for future growth [2]. Main reasons for low yields in Africa are, besides lack of high-quality planting material, fertilizers and irrigation, prevailing insect pests, and viral diseases [3]. Genomic tools such as molecular markers could support breeding efforts to produce varieties with high nutritional value and improved virus and insect resistance that would ensure food security of resource-poor farmers in developing countries.

Sweetpotato breeding is constrained by the complexity of the genetics of this out-crossing hexaploid crop and by the lack of genomic resources. Up to now, sweetpotato sequence information has been limited to some 22,000 expressed sequence tag (EST) sequences and ~ 1,500 GenBank sequences and one bacterial artificial chromosome sequence deposited in public databases. At the Plant Gene Database [http://www.plantgdb.org/download/download.php?dir=/Sequence/ESTcontig/Ipomoea\\_batatas/current\\_version](http://www.plantgdb.org/download/download.php?dir=/Sequence/ESTcontig/Ipomoea_batatas/current_version) and at TIGR Plant Transcript Assemblies <http://plantta.jcvi.org/index.shtml>, assemblies of GenBank-deposited *Ipomoea batatas* ESTs are available. More assembled EST sequences are available from morning glory (*Ipomoea nil*), a wild relative of cultivated sweetpotato [http://compbio.dfci.harvard.edu/tgi/cgi-bin/tgi/gimain.pl?gudb=morning\\_glor](http://compbio.dfci.harvard.edu/tgi/cgi-bin/tgi/gimain.pl?gudb=morning_glor) that might be of use as a model plant for some aspects of sweetpotato genomics. Sweetpotato genomics tools are currently restricted to a medium-density cDNA microarray [http://www.picme.at/index.php/products/arrays/?task=details&species=Sweetpotato%20Microarray%20PIC-ME\\_SWP\\_15K\\_1](http://www.picme.at/index.php/products/arrays/?task=details&species=Sweetpotato%20Microarray%20PIC-ME_SWP_15K_1), linkage maps [4,5], and some 130 published microsatellite (SSR) markers [6-10]. To prepare the path for using the large biodiversity of this crop in molecular breeding of improved cultivars, more genomic resources such as sweetpotato gene sequences and markers are urgently needed.

CIP holds in trust 7,783 sweetpotato accessions, including breeding lines, improved varieties, landraces, and wild accessions from 58 countries. A subset of this collection, consisting of 472 accessions that represent the diversity of this crop with respect to agronomical and resistance traits as well as nutritional quality—referred to as a “composite genotype set”—is available for international distribution in the form of disease-free in vitro plants to facilitate access of breeders to sweetpotato biodiversity [http://gcpcr.grinfo.net/files/cr\\_files/gcpcr\\_file832.xls](http://gcpcr.grinfo.net/files/cr_files/gcpcr_file832.xls). The sweetpotato clone *Tanzania*, a member of the composite genotype set, is a high-yielding, stress-tolerant, and broadly cultivated African landrace that is used in various breeding programs due to its high dry matter content and drought tolerance. This clone has been submitted to transcriptome sequencing in the present work, with the aim to augment the

available gene sequence and marker information for this crop.

454 pyrosequencing has become a popular method for high throughput sequencing. At low cost, it provides a huge amount of sequence information at relative low error frequency [11]. It is widely used for genome resequencing [12], de novo sequencing of small genomes [e.g., [13]], SNP detection [14,15], or transcriptome sequencing [16]. Specialized software for de novo assembly of the relative short 454 sequences, ranging from around 100 bp with the 454 FLX system but now approaching 500 bp with the 454 FLX TITANIUM system, is available. However, only a few software packages claim to be suitable for hybrid assembly of the relatively short 454 reads with Sanger sequences [17-20]. The choice of optimal assembly parameters to significantly reduce redundancy of an EST collection and, at the same time, maintain paralogous sequences separated in different contigs remains a challenging task. Particularly in a highly heterozygote hexaploid plant such as sweetpotato, discrimination between paralogs and allelic variants on whole transcriptome level remains difficult. For an EST assembly, it might therefore be preferable to accept an increased level of redundancy instead of risking the merging of different members of a gene family into one contig by using too loose assembly parameters. The quality of an assembly generally augments with increasing sequence information. Therefore assemblies with a limited number of ESTs represent a work in progress rather than a finished transcriptome assembly. As more sequence information becomes available, reassembly can lead to splitting or rearrangement of contigs, thus leading to an optimized representation of the transcriptome.

Here we present the de novo assembly of 454 sequencing reads from two normalized sweetpotato libraries, together with publically available ESTs, which resulted in a gene index for hexaploid sweetpotato. This gene index facilitates the access to sweetpotato gene sequences and has allowed for the design of gene-based microsatellite markers.

## Results and Discussion

### 454 sequencing

A total of 87,307 raw reads comprising 21,292,096 bases were obtained with a 454 FLX quarter run of a normalized cDNA library of leaves from drought-stressed plants of the sweetpotato clone *Tanzania*. Another quarter run of 454 FLX TITANIUM resulted in 436,817 raw reads and 136,844,411 bases for a normalized cDNA library of stems of the same clone. The average length per read amounted to 243.9 bp for the 454 FLX run and to 313.3 for the 454 FLX TITANIUM run. cDNA synthesis primer sequences present in the reads

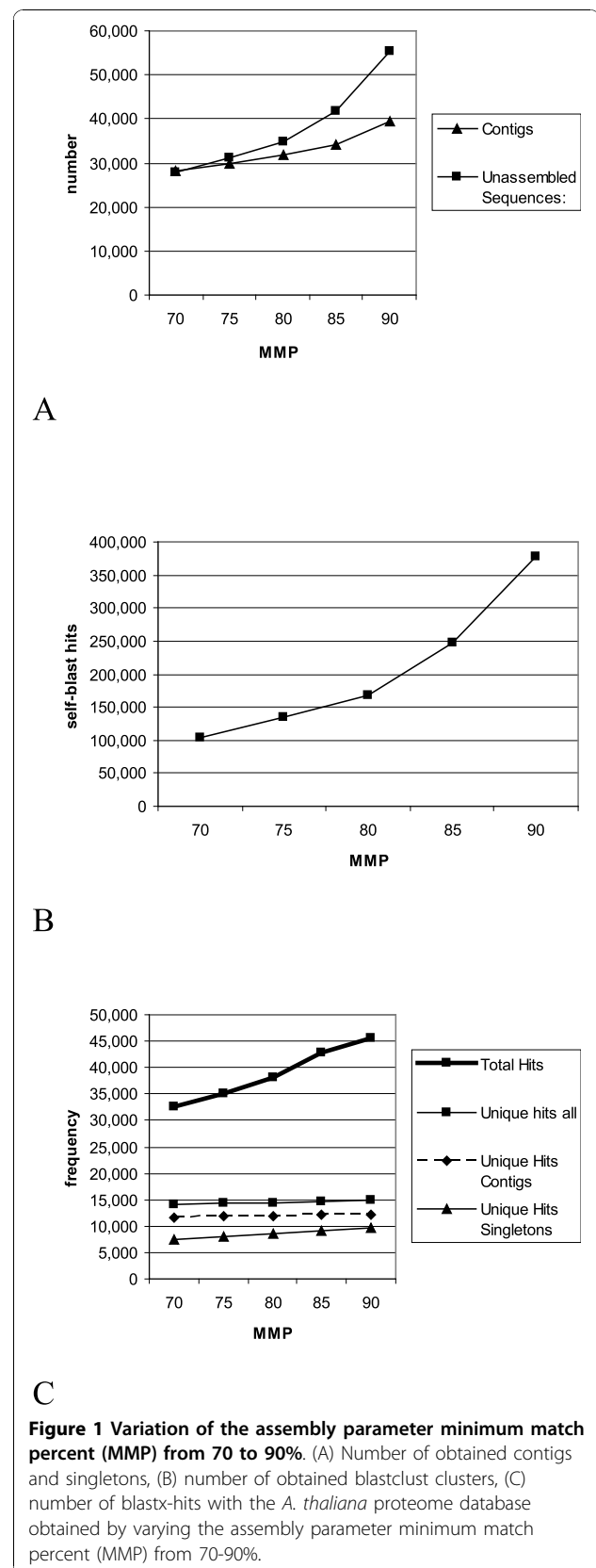
were removed and very short reads with less than 100 bp and low-quality sequences were eliminated. The remaining 402,506 raw reads were blasted against vector-cleaned sweetpotato ESTs from the GenBank. Blast hits at > 80% coverage and > 80% identity were found in 31.6% of the 454 sequences, suggesting that the remaining two-thirds (68.4%) of the 454 reads represent new EST sequences.

### Sequence assembly

The 402,506 raw reads were assembled together with 22,094 ESTs from the GenBank. We attempted to optimize the assembly parameters by stepwise variation of the minimum match percent (MMP) parameter from 70 to 90% and testing for good representativeness and minimal redundancy of the gene index (Figure 1A-C). The contig number obtained changed linearly and slightly when the MMP parameter was increased from 70 to 80%. From 80 MMP on, the increment of singleton number became steeper and the number of contigs augmented stronger from 85 MMP on (Figure 1A).

Redundancy in the gene index was assessed by self-megablast and blastx with a *A. thaliana* protein database. At the nucleic acid level, we performed a self-megablast test to assess similarity between contig and singleton sequences produced at different MMPs. Sequences sharing 80% identity over 80% of their length with another sequence were considered as redundant. As expected, self-megablast hits augmented with increasing MMPs, indicating that sequences representing allelic variants increasingly remained unassembled or were resolved into different contigs. The increase in the number of self-megablast hits went in parallel with the number of sequences and became steeper at MMPs above 80% (Figure 1B). Additionally, we have assessed the redundancy of the assemblies produced at different MMP levels by counting the number of total and unique blastx hits of the contig and singleton sequences with a protein database. At this stage, in order to make redundancy analysis quicker and less demanding with respect to computer power, we used the *A. thaliana* protein database instead of the very large UniRef100 protein set for blastx analysis. Predictably, the total number of blastx hits increased with rising MMP and the increase became steeper above 80% MMP, whereas unique blastx hits increased linearly over the whole range of MMP and at a much lower path than the total hit number. The number of hits increased mainly for singletons, as more sequences remained unassembled at higher MMP values (Figure 1C).

To investigate whether assembly at low MMP results in merging of reads of paralogous sequences into one contig, we have analyzed the number of total and



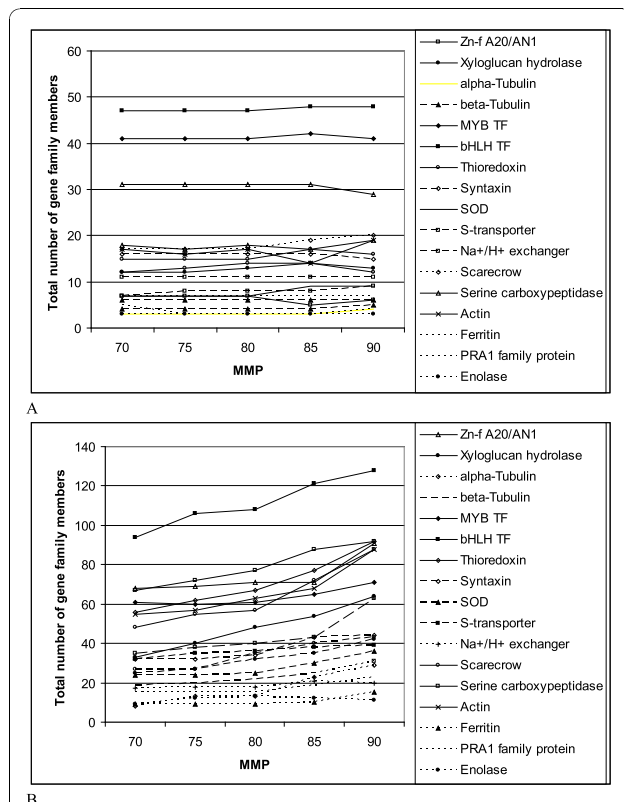
different members of 20 randomly chosen gene families in the assemblies at different MMP (Figure 2A and 2B). In a simple text search using uniprot identifiers and text annotation, we have looked for sequences annotated as Zinc finger A20 and AN1 domain-containing stress-associated protein, xyloglucan endotransglucosylase/hydrolase protein,  $\alpha$ -tubulin,  $\beta$ -tubulin, MYB, bHLH, thioredoxin, syntaxin, superoxide dismutase, sulfate transporter,  $\text{Na}^+/\text{H}^+$  exchanger, scarecrow, serine carboxypeptidase, actin, ferritin, PRA1 family protein, enolase,  $\beta$ -amylase, bZIP, and glutaredoxin according to sequence comparison with proteins of the *A. thaliana* proteome. Although the total count of members over the 20 gene families increased from 734 at 70 MMP to 1,100 at 90 MMP, the number of different gene family

members varied little over the different MMP—from 286 to 296—indicating that the risk of merging paralogs into one contig at low MMP exists but remains low. Therefore, to ensure both good representativeness and low redundancy and, at the same time, to mitigate the risk that reads derived from paralogous sequences are assembled together into one contig, we chose the medium stringent 80 MMP as assembly parameter for the sweetpotato gene index. At 80 MMP the assembly still had relative low redundancy, while the representativeness was better than at lower MMP values, indicated by 400 more unique blastx hits with the *A. thaliana* proteome than at 70 MMP.

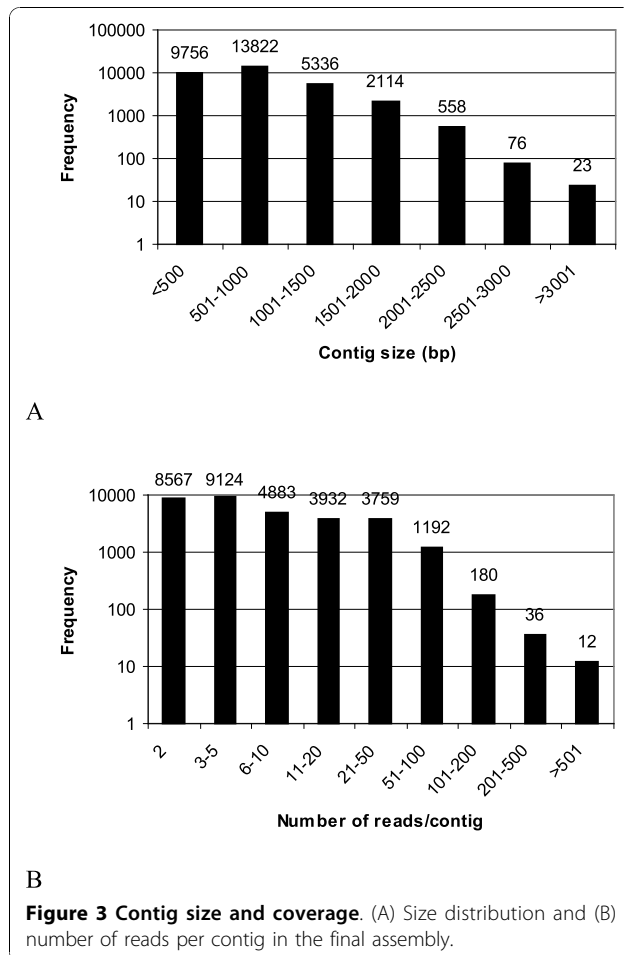
Hybrid assembly of our 454 reads with EST sequences obtained from the GenBank at 80 MMP produced 31,685 contigs and 34,733 reads remained as singletons. Contigs ranged from 100 to 6,872 bp in size, with an average of 790 bp. The cumulative length of the contigs was 25,048,392 bp. The size distribution for the contigs is shown in Figure 3A. A substantial number of large contigs was obtained: 21,929 contigs were > 500 bp in length, and 8,107 were > 1 kb. Sequencing coverage ranged from 2 to 1,863 reads per contig, with an average coverage of 12.3 (Figure 3B).

#### Reciprocal blastn queries with previous *Ipomoea* EST assemblies

An assembly of GenBank-available EST and other sequences of *I. batatas* consisting of 2,472 contig and 6,695 singletons has been released previously [21]. Sequence comparison to this assembly gives an estimate of the amount of novel sequences in the present gene index. Our expectation was that, in addition to new sequences, our gene index should cover all contigs and singletons of the previous assembly, as the EST sequences used in the previous assembly also were co-assembled with the new 454 reads. And indeed, all but 45 out of 9,167 sequences of the previous assembly had hits in our gene index. Of the 45 no-hit sequences, 22 corresponded to GenBank mRNA sequences that were not included as input for our assembly, and 23 other sequences corresponded to singletons of GenBank-derived ESTs of bad quality or with highly repetitive sequences that were filtered out by our sequence cleaning process. A total of 23,151 sequences of the present gene index had significant similarity to 9,166 contigs and singletons of the plant EST assembly. This indicates that redundancy in our gene index is about 2.5 times higher than in the previous assembly. No significant similarity to the previous EST assembly was found in 43,267 gene index sequences that are considered to represent new sequences (Figure 4). Similarly, only 33 sequences of the PlantGDB sweetpotato EST assembly were not contained in our gene index (not shown). Assuming a redundancy of 2.5-fold of our gene index,



**Figure 2 Assessment gene family member changes at different MMP.** Twenty selected gene families (Zinc finger A20 and AN1 domain-containing stress-associated protein, xyloglucan endotransglucosylase/hydrolase protein,  $\alpha$ -tubulin,  $\beta$ -tubulin, MYB, bHLH, thioredoxin, syntaxin, superoxide dismutase, sulfate transporter,  $\text{Na}^+/\text{H}^+$  exchanger, scarecrow, serine carboxypeptidase, actin, ferritin, PRA1 family protein, enolase,  $\beta$ -amylase, bZIP, and glutaredoxin) were analyzed for the total number of members (A) and the number of different members (B) represented in the gene index at 70-90 MMP. While at higher MMP the total number of gene family members increased strongly due to augmentation of the redundancy in the gene index, the representation of different gene family members in the index (B) hardly changed with increasing MMP.



the present gene index would contain about three times more sequence information for sweetpotato genes than the previous EST assemblies.

For *I. nil*, a near relative of sweetpotato, a gene index has been established based on 61,199 EST and 133 mature transcripts (ETs), resulting in 11,754 tentative consensus sequences (contigs), 9,721 EST-singletons, and 39 ET singletons [22], [http://compbio.dfci.harvard.edu/cgi-bin/tgi/gimain.pl?gudb=morning\\_glory](http://compbio.dfci.harvard.edu/cgi-bin/tgi/gimain.pl?gudb=morning_glory). The present gene index had 37,986 significant ( $E = 10^{-6}$ ) blastn hits with the *I. nil* database, while 28,432 sequences remained without a hit and can be considered as specific for sweetpotato. About 19% of the sequences of the *I. nil* gene index (4,146 contigs and singletons) had no significant hits with the present sweetpotato gene index. These reciprocal blastn tests indicate good coverage of the present gene index for sweetpotato, but also a relatively high redundancy compared to previous EST assemblies.

#### Sequence annotation

Of the 66,418 sequences, 39,299 (59%) of the gene index sequences had significant blastx matches ( $E = 10^{-10}$ )

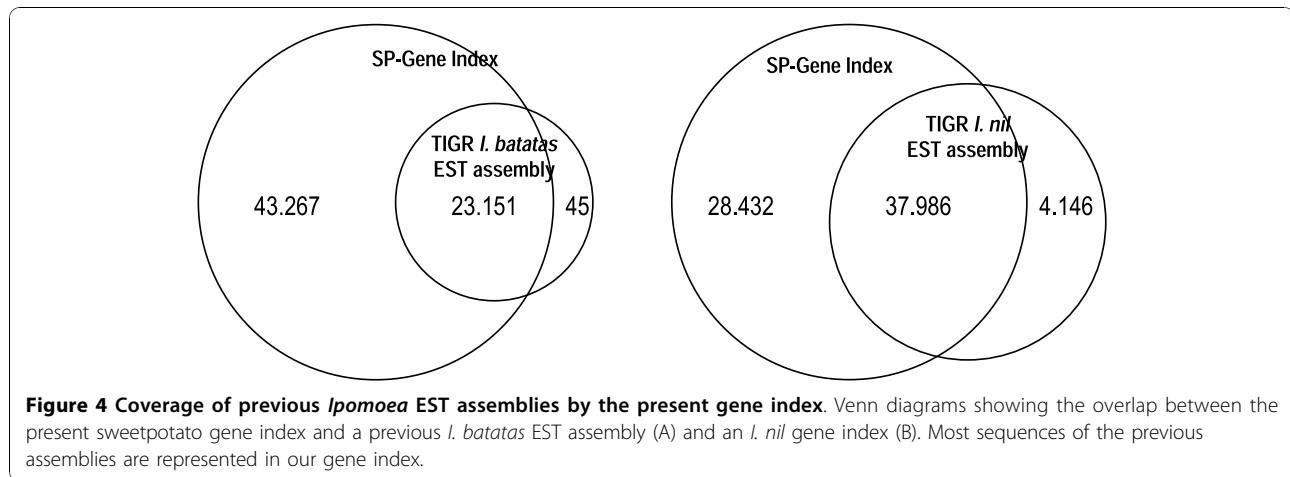
with sequences of the UniRef100 protein database. These matches corresponded to 24,657 different unique UniRef100 accession numbers. The frequency of sequences with significant blastx hits was higher in contigs than in singletons (Figure 5). From 7,728 contigs without significant hits to proteins of the UniRef100 database, 2,829 contained a putative poly-A tail and thus most probably represent a part of a transcribed gene. From the remaining 4,899 contigs, 3,464 had an open reading frame (ORF, counted from a possible methionine start codon to a stop codon) encoding at least 50 amino acids. This suggests that most contigs without blastx hits are in fact derived from protein coding genes.

The lower hit frequency of singletons in blastx searches might be caused by the smaller size of these sequences compared to contigs (373 vs. 790 bp). Another possibility for decreased hit frequency of singleton sequences would be contamination of the cDNA preparation with genomic DNA, resulting in reads derived from genomic DNA that remained unassembled. Analogous to the contig sequences, we also have searched for the presence of poly-A tails and ORFs in singletons without significant blastx hits. From 19,391 singletons without significant similarity to any protein of the UniRef100 database, 6,775 had a putative poly-A tail. Only 635 singletons of the no-hit singletons, including 47 ESTs from the GenBank database, did not encode any ORF larger than 10 amino acids, while the remaining no-hit singletons had ORFs from 30 to 896 bp. The presence of ORFs in more than 90% of the un-annotated singletons suggests that these sequences also are derived from protein coding genes.

The sweetpotato gene index including the annotation of the contigs and singletons can be viewed, searched, and downloaded at [http://www.cipotato.org/sweetpotato\\_gene\\_index](http://www.cipotato.org/sweetpotato_gene_index).

Not all contigs and singletons, however, were derived from sweetpotato: several sequences were clearly identified as viral sequences (Tab. 1). These viral sequences were derived from sweetpotato feathery mottle virus, sweetpotato chlorotic stunt virus, sweetpotato leaf curl virus, or viruses with similarity to potato virus A and petunia vein clearing virus that apparently have been present in the experimental plants. Also, two singleton sequences derived from Sanger ESTs downloaded from the GenBank represented viral transcripts (Tab. 1).

A total of 24,763 out of the 39,299 blastx-annotated sequences gene ontology (GO) terms could be associated. We annotated the gene index sequences at level 2 for the three main GO vocabularies: cellular component, biological process, and molecular function (Figure 6A-C).



### Microsatellite marker identification and testing

Microsatellites for sweetpotato have been identified in ESTs previously [10]. To ensure identification of new microsatellite motifs only, sequences similar to GenBank ESTs were excluded from the search. A total of 1,621 new SSR motifs have been identified in the gene index, including 936 di-, 581 tri-, and 124 tetra-nucleotide SSR motifs with a minimum of 7, 5, and 5 contiguous repeating units, respectively. For SSR testing, we have taken into account the sequence redundancy of the gene index and selected only those SSRs that were present either in a single contig or singleton or in a group of homologous sequences that were derived most probably from a single locus. This analysis resulted in 223 SSR loci, for which high-quality primers were designed. Amplification of the 223 SSR loci was tested in eight sweetpotato clones, consisting of

six hexaploid and two diploid accessions (Tab. 2). From the 223 selected SSR loci, 195 yielded amplification products in the predicted size, 150 SSRs revealed to be polymorphic in the eight-clone test set, and 26 were monomorphic representing in total 729 alleles (mean 4.1 alleles/locus, Additional file 1). None of the SSRs showed more than 2 alleles in any of the diploid test accessions but up to six alleles in hexaploid sweetpotato. For 19 SSR primer pairs that successfully amplified fragments from genomic DNA, polymorphism tests have not been performed.

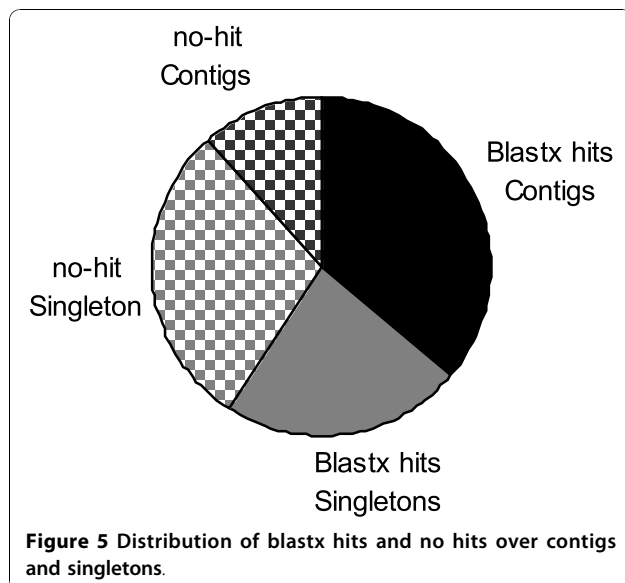
### Conclusions

The present gene index [http://www.cipotato.org/sweetpotato\\_gene\\_index](http://www.cipotato.org/sweetpotato_gene_index) strongly augments the available sequence information on sweetpotato genes. Owing to the heterozygous and hexaploid nature of this plant, the assembly contains a relatively high level of redundancy compared to previous assemblies to prevent merging of paralogous sequences into contigs. Fifty-nine percent of the obtained sequences could be functionally annotated. The index has been successfully mined for microsatellite sequences and 195 out of 223 selected loci could be successfully amplified.

### Methods

#### Plant material, cDNA synthesis, 454 sequencing

Shoots from field-grown plants of the sweetpotato *I. batatas* variety *Tanzania* (CIP accession number 440160) were acclimated to the greenhouse and cultivated in pots for one month. Drought was then imposed by not watering the plants for eight weeks. After that time, leaf and stem tissue were sampled separately and total RNA was produced using the Trizol reagent according to the instructions of the supplier (Invitrogen). Complementary DNA was synthesized from the two RNA batches by Evrogen <http://www.evrogen.com>



**Table 1 Viral sequences contained in the sweetpotato gene index**

| Contig/singleton ID | length | ID            | E-value | Text annotation   |
|---------------------|--------|---------------|---------|---|
| 03767               | 1851   | Q59A02        | 0.0     | Polyprotein (Fragment) n = 1 Tax = Sweet potato feathery mottle virus RepID = Q59A02_9POTV    |
| 10592               | 1329   | Q6XKE6        | 6e-49   | Reverse transcriptase n = 1 Tax = Petunia vein clearing virus isolate Hohn RepID = POLG_PVCV2 |
| 12069               | 526    | O39734        | 3e-90   | Polyprotein n = 1 Tax = Sweet potato feathery mottle virus RepID = O39734_9POTV               |
| 12293               | 504    | UPI0000163D32 | 6e-67   | P3 protein n = 1 Tax = Sweet potato feathery mottle virus RepID = UPI0000163D32               |
| 13375               | 686    | O39734        | 2e-84   | Polyprotein n = 1 Tax = Sweet potato feathery mottle virus RepID = O39734_9POTV               |
| 23606               | 528    | Q9QS58        | 1e-101  | Coat protein AV1 n = 1 Tax = Sweet potato leaf curl virus RepID = Q9QS58_9GEMI                |
| 27246               | 614    | Q9QBT4        | 2e-67   | Polyprotein n = 1 Tax = Potato virus A RepID = Q9QBT4_PVMA                                    |
| 27646               | 725    | UPI0000156FE9 | 1e-140  | NIb protein n = 1 Tax = Sweet potato feathery mottle virus RepID = UPI0000156FE9              |
| 29621               | 347    | Q9QS57        | 2e-47   | AC3 n = 1 Tax = Sweet potato leaf curl virus RepID = Q9QS57_9GEMI                             |
| 131893_1741_0589-I  | 221    | UPI0000163D38 | 9e-36   | coat protein n = 1 Tax = Sweet potato feathery mottle virus RepID = UPI0000163D38             |
| 158451_1257_3402-I  | 250    | B3Y549        | 4e-37   | AV2 protein n = 1 Tax = Sweet potato leaf curl virus RepID = B3Y549_9GEMI                     |
| DC882409.1          | 418    | Q80MW4        | 2e-28   | Polyprotein (Fragment) n = 1 Tax = Sweet potato feathery mottle virus RepID = Q80MW4_9POTV    |
| EE874850.1          | 669    | Q8JJW9        | 1e-106  | Polyprotein n = 1 Tax = Sweet potato chlorotic stunt virus RepID = Q8JJW9_9CLOS               |
| FRFM4LP02P1T45-II   | 318    | UPI0000163D31 | 5e-34   | HC-Pro protein n = 1 Tax = Sweet potato feathery mottle virus RepID = UPI0000163D31           |
| FRFM4LP02QRY4N-II   | 502    | Q5GIU0        | 5e-45   | Polyprotein (Fragment) n = 1 Tax = Sweet potato feathery mottle virus RepID = Q5GIU0_9POTV    |
| FRFM4LP02R1W0W-II   | 382    | UPI0000163D34 | 4e-64   | CI protein n = 1 Tax = Sweet potato feathery mottle virus RepID = UPI0000163D34               |
| FRFM4LP02RTOLA-II   | 328    | C4N332        | 2e-36   | Polyprotein n = 1 Tax = Sweet potato feathery mottle virus RepID = C4N332_9POTV               |
| FRFM4LP02RUC7U-II   | 451    | O39734        | 4e-73   | Polyprotein n = 1 Tax = Sweet potato feathery mottle virus RepID = O39734_9POTV               |

using the SMART approach [23], normalized according to [24], and amplified. Seven µg DNA of each normalized cDNA library was submitted to a quarter 454 sequencing run at the School of Biological Sciences, University of Liverpool. The cDNA library of leaves was sequenced with the 454 FLX technology and the stem library was sequenced using 454 FLX TITANIUM.

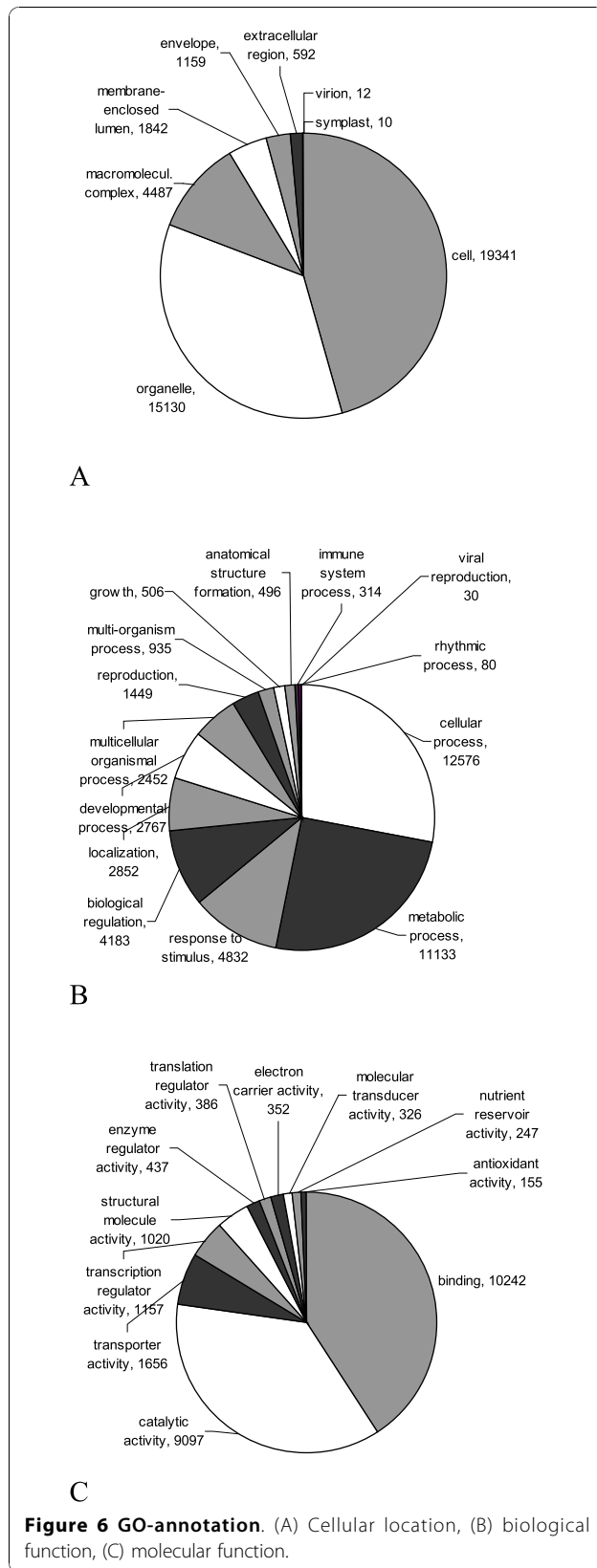
#### Sequence cleaning and assembly

Sequence cleaning and assembly were performed on the CIP High Performance Computer <http://hpc.cip.cgiar.org/>. Adaptor primer and SMART oligonucleotide sequences as well as low-complexity regions present in the 454 raw reads were masked using the open source

software RepeatMasker 3.2.7 <http://www.repeatmasker.org/RMDownload.html>. Short reads (< 100 bp) were eliminated from the sequence and quality files using custom scripts. A total of 20,094 publically available sweetpotato EST sequences <http://www.ncbi.nlm.nih.gov/Genbank/> were downloaded from <http://www.ncbi.nlm.nih.gov/sites/entrez> and cleaned from vector sequences using SeqClean [http://compbio.dfci.harvard.edu/tgi/cgi-bin/tgi/download.pl?ftp\\_dir=software&file\\_dir=seqclean/seqclean.tar.gz](http://compbio.dfci.harvard.edu/tgi/cgi-bin/tgi/download.pl?ftp_dir=software&file_dir=seqclean/seqclean.tar.gz). The 454 reads were assembled together with the GenBank ESTs with the NGen software (DNASTAR, Madison, WI, USA). For optimization of the assembly, the assembly was tried at MMP in a range from 70 to 90% with 5% intervals. The

**Table 2 Sweetpotato accessions used for SSR testing**

| CIP number | Species                | Cultivar Name | Origin           | Description                                |
|------------|------------------------|---------------|------------------|--|
| 107665.9   | <i>Ipomoea trifida</i> | M9            | CIP              | diploid mapping parent                     |
| 107665.19  | <i>Ipomoea trifida</i> | M19           | CIP              | diploid mapping parent                     |
| 401206     | <i>Ipomoea batatas</i> | 401206        | Mexico           | hexaploid, landrace                        |
| 420027     | <i>Ipomoea batatas</i> | Zapallo       | Peru             | hexaploid, landrace                        |
| 440025     | <i>Ipomoea batatas</i> | Xushu 18      | China            | hexaploid, improved variety                |
| 440131     | <i>Ipomoea batatas</i> | Naveto        | Papua New Guinea | hexaploid, landrace                        |
| 440132     | <i>Ipomoea batatas</i> | Beauregard    | USA              | hexaploid mapping parent, improved variety |
| 440166     | <i>Ipomoea batatas</i> | Tanzania      | Uganda           | hexaploid mapping parent, landrace         |



final assembly was done using the following parameters: match size: 25, gap penalty: 7, mismatch penalty: 12, match score: 10, minimal match percentage: 80, and match spacing: 40. The quality of the assembly was assessed manually for 300 randomly selected contigs by checking the plausibility of the read alignments. Redundancy of the assembly was checked by selfblast using megablast (NCBI) on the CIP High Performance Computer <http://hpc.cip.cgiar.org>.

#### Sequence annotation

Contigs and singletons were annotated through blastx sequence comparison to the UniRef100 database <http://www.uniprot.org> and *A. thaliana* proteins (TAIR, <http://www.arabidopsis.org>) using BLAST 2.2.14 on the CIP High Performance Computer <http://hpc.cip.cgiar.org>. The best BLAST hits were filtered out with the custom R-script Chomper2.R. GO annotation was performed using Blast2GO software v2.4.2 [25,26] with a blastx cutoff of  $10^{-6}$ .

#### Identification of open reading frames

Open reading frames in contig and singleton sequences without significant blastx hit were identified using OrfPredictor <http://proteomics.yasu.edu/tools/OrfPredictor.html>.

#### Microsatellite marker identification and testing

Gene index sequences that had high similarity to GenBank-deposited EST sequences were filtered out to avoid identification of already known SSR sequences. SSR motifs were identified with the SSRlocator [27], <http://minerva.ufpel.edu.br/~lmaia.faem/ssr1.html> limiting the hits to motifs that consisted of at least 7 dimers, 5 trimers, or tetramers. Primers for SSR loci were designed with Primer3 with 100-200 bp amplicon size. The primer sequences of the identified SSR loci were compared via blastn with the gene index sequences. Only those primers that gave an unambiguous hit with one contig or singleton or "single locus sequence group" were recorded as candidate SSR. A single locus sequence group was defined as a group of sequences that, based on sequence similarity, was putatively derived from a single locus. We assumed sequences to represent a single locus if the distal sequences were identical. SSR loci were polymerase chain reaction (PCR) amplified in six biodiverse hexaploid sweetpotato and two diploid wild sweetpotato accessions. Four of these accessions represented clones from Asia, Latin America, and Africa, and four accessions were parents of mapping populations (Tab. 2). DNA extraction was done according to [28] for SSR analysis, and PCR



reactions contained 1x PCR-buffer with 2 mM MgCl<sub>2</sub>, 0.6 mM dNTPs (New England Biolabs), 0.5 μM forward and reverse primer, and 0.5 U Taq polymerase (New England Biolabs) in a volume of 25 μl. Amplification conditions were 4 min. initial denaturation followed by 30 cycles of 1 min at 94°C, 1 min. at annealing temperature (given with the description of the SSR primers, 'Additional file 1), 1 min. at 72°C, and followed by terminal elongation at 72°C for 7 min. The obtained fragments were separated on a Li-Cor 4300 (LI-COR Biosciences, Lincoln, NE, USA) and analyzed essentially as described in [29].

## Additional material

**Additional file 1: Sweetpotato SSR marker: Primer sequences and SSR motifs identified in the sweetpotato gene index and successfully amplified.**

## Acknowledgements

We thank Raymundo Gutierrez for growing the experimental plants. The works were funded by the Generation Challenge Program <http://www.generationcp.org/> GCP project number: G4008.09. We thank Gary Harrison for improving the manuscript.

## Author details

<sup>1</sup>Germplasm Enhancement and Crop Improvement Division, International Potato Center, La Molina, Lima, Peru. <sup>2</sup>Research Informatics Unit, International Potato Center, La Molina, Lima, Peru. <sup>3</sup>Genetic Resources Conservation and Characterization Division, International Potato Center, La Molina, Lima, Peru. <sup>4</sup>Department of Horticulture, Louisiana State University Agricultural Center, Baton Rouge, LA 70803, USA.

## Authors' contributions

LRT produced the RNA for cDNA synthesis, performed the 454 sequence cleaning, and performed together with RoS the sequence assembly and annotation and participated together with GR, CR, RR, JYK, CQ, DC, RA, and JS with the SSR marker design and testing. ReS, OP, and JP produced the format of the gene index database and provided bioinformatics expertise. LR, JS, and JH produced perl and R scripts for sequence analysis and annotation. The manuscript was produced by RoS and was approved by all authors.

Received: 8 June 2010 Accepted: 26 October 2010

Published: 26 October 2010

## References

- Low JW, Arimond M, Osman N, Cuinguara B, Zano F, Tschirley D: A food-based approach introducing orange-fleshed sweet potatoes increased vitamin A intake and serum retinol concentrations in young children in rural Mozambique. *J Nutr* 2007, **137**:1320-1327.
- FAOSTAT:[<http://faostat.fao.org/>], (Accessed 5 October 2010).
- Low J, Lynam J, Lemaga B, Crissman C, Barker I, Thiele G, Namanda S, Wheatley C, Andrade M: Sweetpotato in Sub-Saharan Africa. In *The sweetpotato*. Edited by: Loebenstein G, Thottappilly G. Heidelberg: Springer; 2009:359-390.
- Kriegner A, Cervantes JC, Burg K, Mwanga ROM, Zhang D: A genetic linkage map of sweetpotato (*Ipomoea batatas* (L.) Lam.) based on AFLP markers. *Mol Breeding* 2003, **11**:169-185.
- Cervantes-Flores JC, Yencho GC, Kriegner A, Pecota KV, Faulk MA, Mwanga ROM, Sosinski BR: Development of a genetic linkage map and identification of homologous linkage groups in sweetpotato using multiple-dose AFLP markers. *Mol Breeding* 2008, **21**:511-532.
- Buteler MI, Jarret RL, LaBonte DR: Sequence characterization of microsatellites in diploid and polyploid *Ipomoea*. *TAG* 1999, **99**:123-132.
- Jarret RL, Bowen N: Simple sequence repeats (SSRs) for sweet potato germplasm characterization. *Plant Gen Res Newsletter* 1994, **100**:9-11.
- Tseng YT, Lo HF, Hwang SY: Genotyping and assessment of genetic relationships in elite polycross breeding cultivars of sweetpotato in Taiwan based on SAMPL polymorphisms. *Bot Bull Acad Sinica* 2002, **43**:99-105.
- Zhang DP, Carbajulca D, Ojeda L, Rossel G, Milla S, Herrera C, Ghislain M: Microsatellite Analysis of Genetic Diversity in Sweetpotato Varieties from Latin America. *CIP Program Report 1999-2000, International Potato Center, Lima, Peru*.
- Hu J, Nakatani M, Mizuno K, Fujimura T: Development and characterization of microsatellite markers in sweetpotato. *Breeding Sci* 2004, **54**:177-188.
- Harismendy O, Ng PC, Strausberg RL, Wang X, Stockwell TB, Beeson KY, Schork NJ, Murray SS, Topol EJ, Levy S, Frazer KA: Evaluation of next generation sequencing platforms for population targeted sequencing studies. *Gen Biol* 2009, **10**:R32.
- Bentley DR: Whole-genome re-sequencing. *Curr Opin Gen & Development* 2006, **16**:545-552.
- Thomson NR, Holden MTG, Carder C, Lennard N, Lockey SJ, Marsh P, Skipp P, O'Connor CD, Goodhead I, Norbertzack H, Harris B, Ormond D, Rance1 R, Quail MA, Parkhill J, Stephens RS, Clarke IN: *Chlamydia trachomatis*: Genome sequence analysis of lymphogranuloma venereum isolates. *Genome Res* 2008, **18**:161-171.
- Barbazuk WB, Emrich SJ, Chen HD, Li L, Schnable PS: SNP discovery via 454 transcriptome sequencing. *Plant J* 2007, **51**:910-918.
- Bundock PC, Elliott FG, Ablett G, Benson AD, Casu RE, Aitken KS, Henry RJ: Targeted single nucleotide polymorphism (SNP) discovery in a highly polyploid plant species using 454 sequencing. *Plant Biotech J* 2009, **7**:347-354.
- Vera JC, Wheat CW, Fescemyer HW, Frilander MJ, Crawford D, Hanski I, Marden JH: Rapid transcriptome characterization for a nonmodel organism using 454 pyrosequencing. *Mol Ecology* 2008, **17**:1636-1647.
- Chevreux B, Pfisterer T, Drescher B, Driesche AJ, Müller WEG, Wetter T, Suhai S: Using the miraEST assembler for reliable and automated mRNA transcript assembly and SNP detection in sequenced ESTs. *Genome Res* 2004, **14**:1147-1159.
- Miller JR, Delcher AL, Koren S, Venter E, Walenz BP, Brownley A, Johnson J, Li K, Mobarry C, Sutton G: Aggressive assembly of pyrosequencing reads with mates. *Bioinformatics* 2008, **24**:2818-2824.
- Papanicolaou A, Stierli R, Ffrench-Constant RH, Heckel DG: Next generation transcriptomes for next generation genomes using *est2assembly*. *BMC Bioinformatics* 2009, **10**:447.
- Soderlund C, Johnson E, Bomhoff M, Descour A: PAVE: Program for assembling and viewing ESTs. *BMC Genomics* 2009, **10**:400.
- Childs KL, Hamilton JP, Zhu W, Ly E, Cheung F, Wu H, Rabinowicz PD, Town CD, Buell CR, Chan AP: The TIGR Plant Transcript Assemblies database. *Nuc Ac Res* 2007, **35**:D846-51.
- Quackenbush J, Cho J, Lee D, Liang F, Holt I, Karamycheva S, Parvizi B, Pertea G, Sultana R, White J: The TIGR Gene Indices: analysis of gene transcript sequences in highly sampled eukaryotic species. *Nuc Ac Res* 2001, **29**:159-164.
- Zhu YY, Machleder EM, Chenchik A, Li R, Siebert PD: Reverse transcriptase template switching: a SMART approach for full-length cDNA library construction. *Biotechniques* 2001, **30**:892-897.
- Shagin DA, Rebrikov DV, Kozhemyako VB, Altshtuler IM, Shcheglov AS, Zhulidov PA, Bogdanova EA, Staroverov DB, Rasskazov VA, Lukyanov S: A novel method for SNP detection using a new duplex-specific nuclease from crab hepatopancreas. *Genome Res* 2002, **12**:1935-1942.
- Conesa A, Götz S, García-Gómez JM, Terol J, Talón M, Robles M: Blast2GO: a universal tool for annotation, visualization and analysis in functional genomics research. *Bioinformatics* 2005, **21**:3674-3676.
- Aparicio G, Gotz S, Conesa A, Segrelles D, Blanquer I, García JM, Hernandez V, Robles M, Talon M: Blast2GO goes grid: developing a grid-enabled prototype for functional genomics analysis. *Stud Health Technol Inform* 2006, **120**:194-204.
- Da Maia LC, Palmieri DA, de Souza VQ, Kopp MM, de Carvalho FI, Costa de Oliveira A: SSR Locator: Tool for simple sequence repeat discovery

integrated with primer design and PCR simulation. *Int J Plant Genomics* 2008, **41**:2696.

28. Doyle JJ, Doyle JL: A rapid DNA isolation procedure for small quantities of fresh leaf tissue. *Phytochem Bulletin* 1987, **19**:11-15.
29. Ghislain M, Nunez J, del Rosarion Herrera M, Pignataro J, Guzman F, Bonierbale M, Spooner DM: Robust and highly informative microsatellite-based genetic identity kit for potato. *Mol Breeding* 2009, **23**:377-388.

doi:10.1186/1471-2164-11-604

**Cite this article as:** Schafleitner *et al.*: A sweetpotato gene index established by de novo assembly of pyrosequencing and Sanger sequences and mining for gene-based microsatellite markers. *BMC Genomics* 2010 **11**:604.

**Submit your next manuscript to BioMed Central  
and take full advantage of:**

- Convenient online submission
- Thorough peer review
- No space constraints or color figure charges
- Immediate publication on acceptance
- Inclusion in PubMed, CAS, Scopus and Google Scholar
- Research which is freely available for redistribution

Submit your manuscript at  
[www.biomedcentral.com/submit](http://www.biomedcentral.com/submit)

