

Objectives, populations, numbers, stresses, measurements

Passport data (GIS) to enrich in sources of tolerance and as indirect characterization?

Marteen van Ginkel

Evaluation of a representative collection in a field experiment, 200 sorghum accessions

Marcel de Raïssac

QTL mapping studies

Michael Baum

Characterization of QTL-introgressed or NILs, 10s sorghum and pearl millet lines/families

Tom Hash

Mutants: from 10000s to s

Mathias Lorieux

Cell/tissue

Gene expression studies

Hei Leung

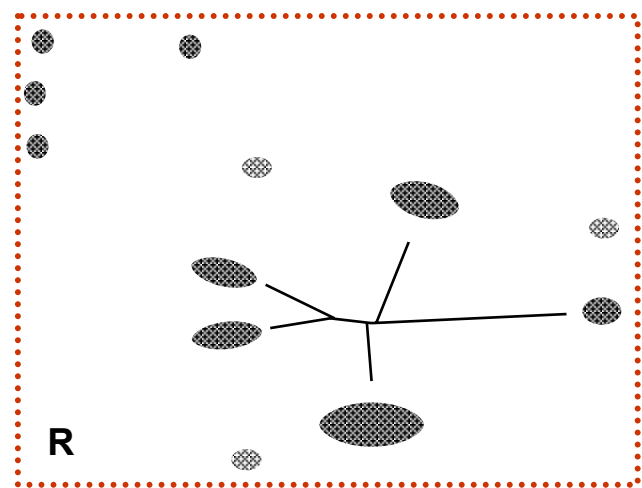
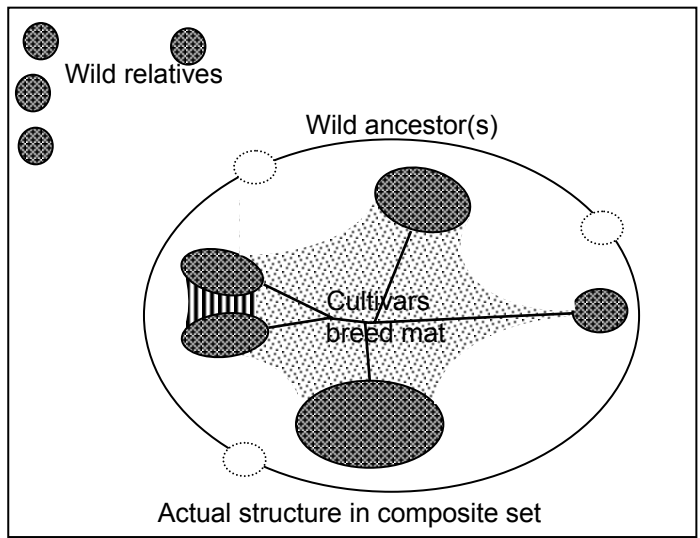
Phenotyping for reaction to drought in Génoplante

François Tardieu

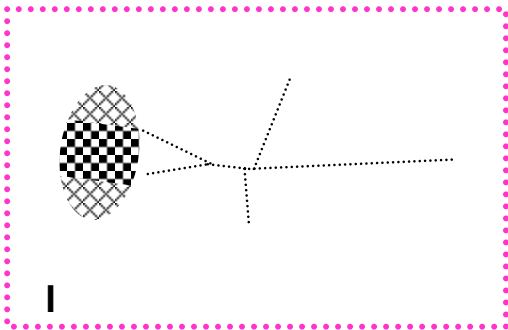
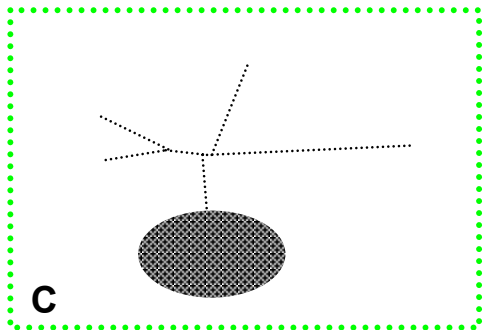
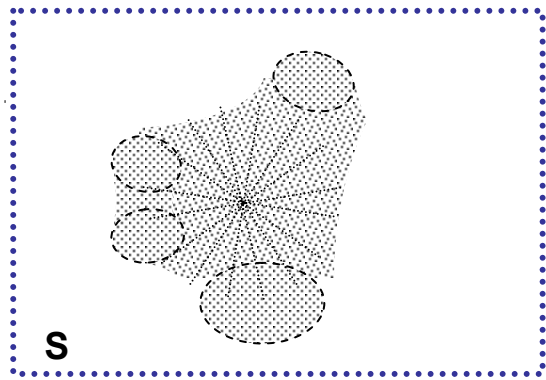
Zaragoza meeting: reference sample for conducting association studies

3000 → 100s accessions

Jean Christophe Glaszmann



<i>Sampling rationale</i>	<i>Linkage Function</i>	<i>distribution</i>	<i>adaptation to a single environment for phenotyping</i>
Representation	F	global	discontinuous
Star	L, F	global	continuous
Interface	L	local	continuous
Compartment	L, F	partial	continuous



How do we make use of marker data to build a reference sample?